

01202 683444

Orchard Plaza, 41 High Street
Poole, Dorset, BH15 1EG

www.quayliving.co.uk



19, Forest Road, Poole

Poole, BH13 6DQ

£1,450 Per Month

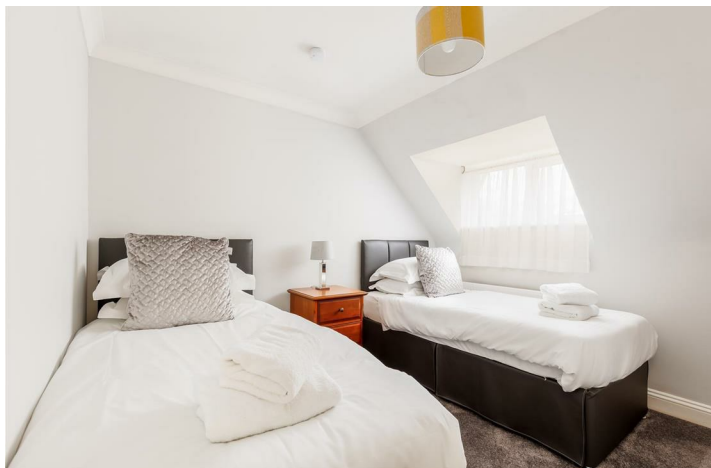


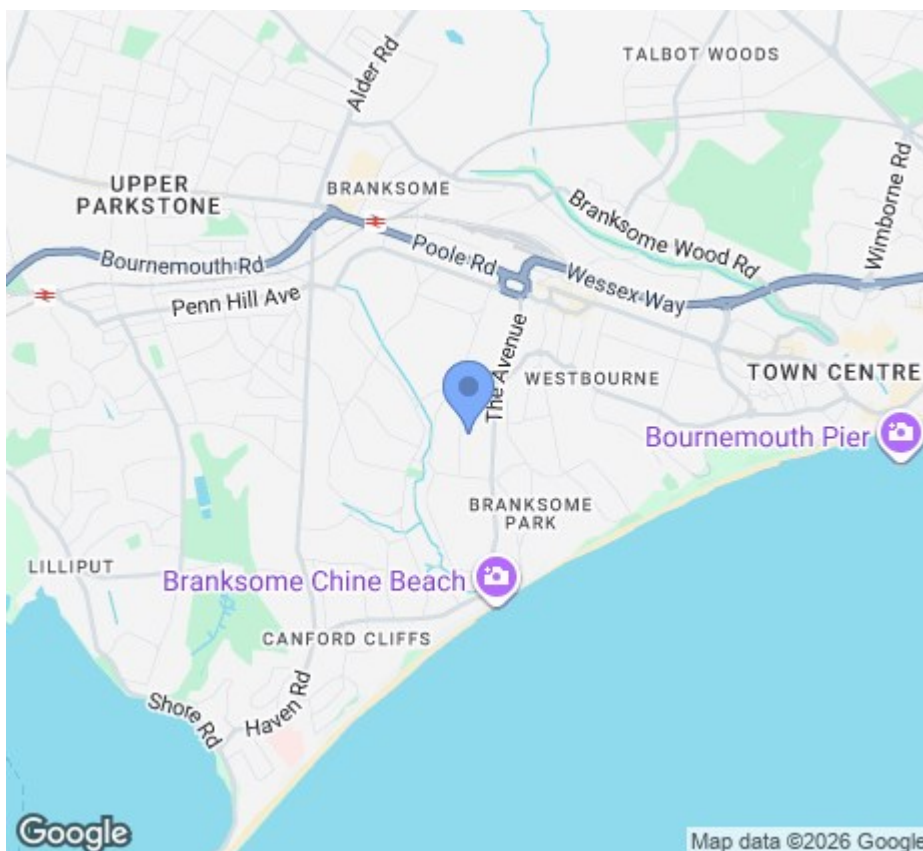
****3-5 MONTH LET ONLY****

Three-bedroom, two-bathroom apartment (sleeps 7) with beautiful communal gardens. Situated 15 minutes walk from Branksome Chine Beach and just 10 minutes drive into Bournemouth with a super choice of restaurants and bars.

Situated on the second floor of a 1920's development with an extension in the 1990's. Entrance with stairs up to the second floor. Living room with large corner sofa. Separate, open-plan kitchen and dining area. Fully fitted kitchen with Neff kitchen appliances including stainless steel 4-burner gas hob and extractor, electric fan-assisted double oven, fridge / freezer, dishwasher, microwave, washing machine and tumble dryer. Master Bedroom (6ft super-kingsize double) with TV. Ensuite (walk-in shower, sink, toilet). Second bedroom with 4ft 6in double bed and 3ft single bed. Third bedroom with twin 3ft single bed. Family bathroom (bath, sink, toilet and shaver point).







Energy Efficiency Rating		
	Current	Potential
Very energy efficient - lower running costs		
(92 plus) A		
(81-91) B		
(69-80) C		
(55-68) D		
(39-54) E		
(21-38) F		
(1-20) G		
Not energy efficient - higher running costs		
England & Wales EU Directive 2002/91/EC		

Agent Note: Whilst every care has been taken to prepare these sales particulars, they are for guidance purposes only. All representations including descriptions, dimensions and photos are given, in good faith and are believed to be correct, but any intending purchaser should not rely on them as statements or representations of fact but must satisfy themselves as to their correctness. Appliances and central heating systems have not been checked by Quay Living or their employees and we recommend that purchasers instruct a qualified person to check all appliances / service before legal commitment.



01202 683444
Orchard Plaza, 41 High Street
Poole, Dorset, BH15 1EG
www.quayliving.co.uk

